

# Add videos to your articles

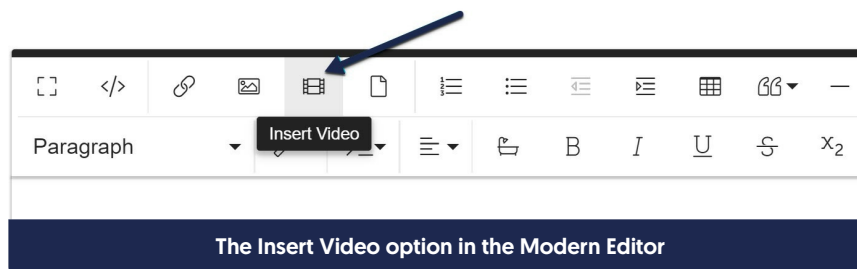
Last Modified on 04/03/2024 1:21 pm EDT

You can quickly and easily embed videos into your articles using the Insert Video option in the Modern editor.



We cap individual file upload size at 200MB. Many longer videos exceed this. For those videos, we recommend hosting on a third party video provider and using the second option here [Embedded Code].

There are four ways to insert videos. For all four, you'll begin the process in the editor by clicking on the **Insert Video** icon in the editor toolbar:

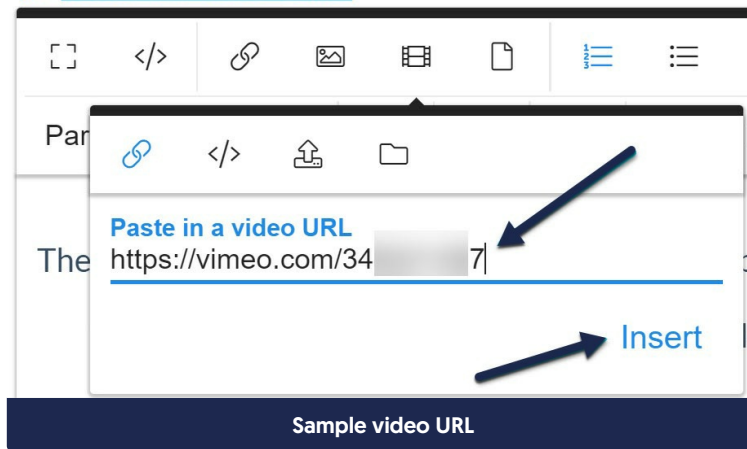


## 1. By URL (the link icon)

Use the By URL option to paste in a URL from Youtube, Vimeo, Dailymotion, Yahoo, or Rutube. The editor will automatically embed it for you using that site's player, using whatever defaults exist for the video.

To use this option:

- a. Click the link icon (first icon) in the Insert Video pop-up.
- b. Paste in the URL to the video.
- c. Click the **Insert** button.

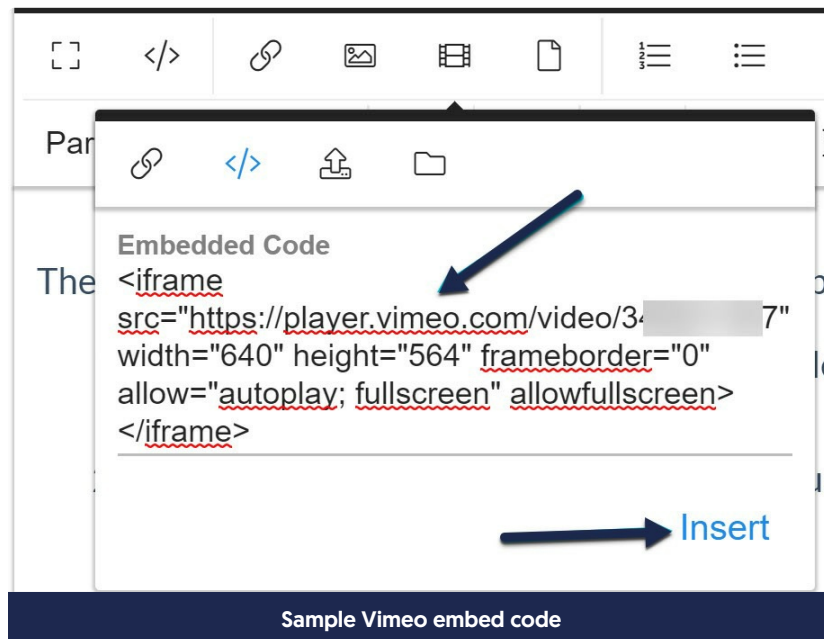


## 2. Embedded Code (the </> icon)

Most third-party video providers (such as Vimeo, Wistia, YouTube, etc.) will generate embed codes for their videos. Depending on your video provider, you may have a bit more control with the Embedded Code in how the video displays. By URL uses the default settings for the video; with Embedded Codes, you can sometimes toggle various configuration options.

To use this option:

- Click the code icon (second icon) in the Insert Video pop-up.
- Paste in the Embed Code for your video.
- Click the Insert button.



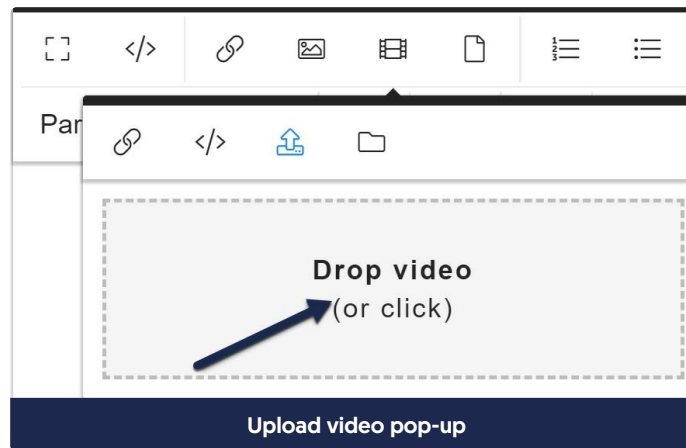
If you're trying to paste Wistia embed codes and having trouble, see [Wistia video embeds](#) for more details.

### 3. Upload Video (upload arrow)

Use this option to upload a video file directly from your computer to KnowledgeOwl. File size limit is 200MB. The video will be displayed using an HTML5 video player, which supports MP4, WebM, and Ogg video formats. MP4 is the only file type that works in all major browsers.

To use this option:

- a. Click the upload icon (third icon) in the Insert Video pop-up.
- b. Drag a video file from your computer into the pop-up or click the Drop video area to open a file browser window to locate the file and add it.



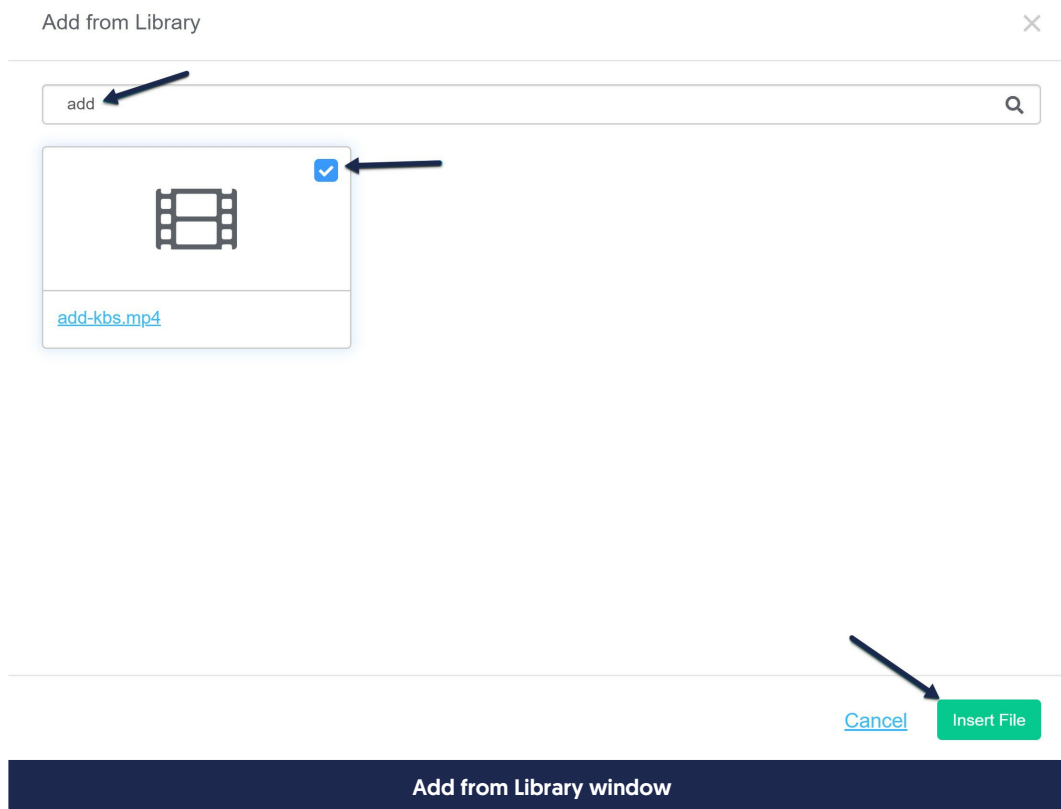
- c. Once you've selected or dropped the video you'd like to upload, it will automatically be uploaded and inserted.

### 4. Add From Library (folder icon)

Use this option to add a video that you've already uploaded to your File Library.

To use this option:

- a. Click the folder icon (final icon) in the Insert Video pop-up.
- b. This will open an **Add from Library** window.



- c. Browse or search for the video you wish to upload.
- d. When you find the correct video, click on the thumbnail for it to select it (this will add a checkmark in the upper right corner).
- e. Click the **Insert File** button to insert the video.

## Editing the inserted video

Once your video has been uploaded, you can further tweak how it displays by clicking in the white space next to the video. This will bring up a contextual menu:



You can use this menu to:

1. Replace this video with a different video

2. Remove this video from the article
  3. Change the Display option for the video (Inline vs. Break text)
  4. Change the Alignment for the video (Left, None, Right)
  5. Resize the video
-